

CTT - 100S

TOROIDAL CONDUCTIVITY / TDS TRANSMITTER

Features

- On-Line Measurement
- Non Volatile memory retains program settings during power failures
- 4-20 mA DC Output / 4-20 mA with HART (Generic)
- Auto / Manual Temperature Compensation
- On-Line Indication through LCD Display
- Simple Operating Interface
- 2 Wire System

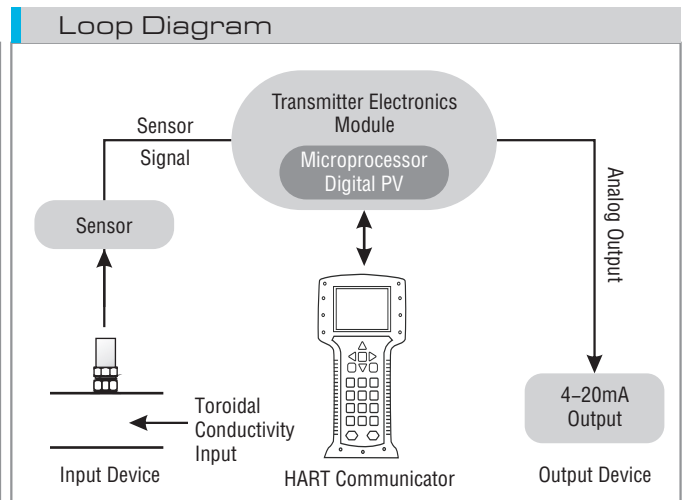
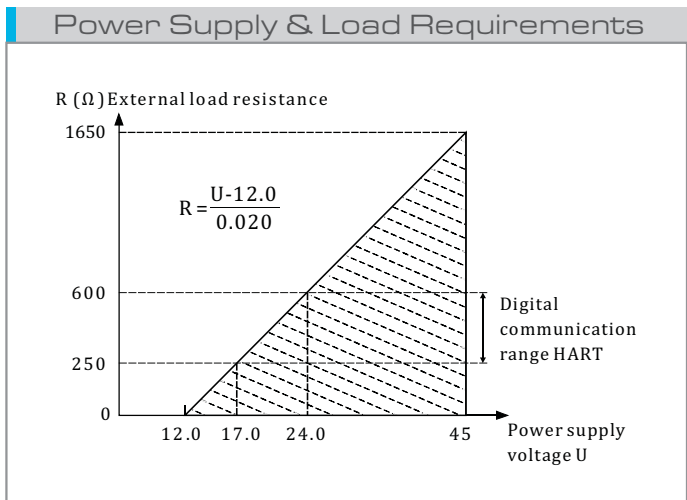
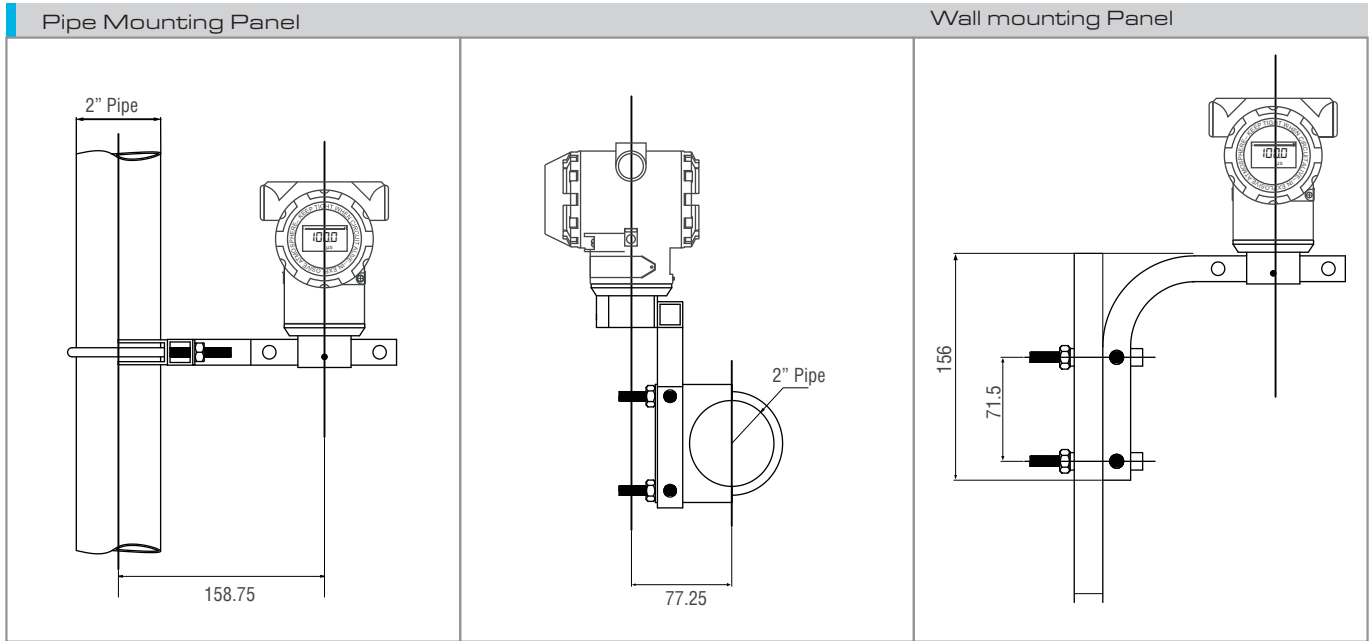
Description

Electronet series CTT-100S are Conductivity transmitters used for various industrial applications. It can accept input from Toroidal Conductivity Electrode & conductivity signal is transmitted in the form of electrical 4 – 20 mA signal. The on-line conductivity indication is provided through LCD. Span/Zero adjustments are easily accessible.



Technical Specifications

| | |
|----------------------------------|---|
| Type of Input | From Toroidal Conductivity Electrode |
| Calibration Range | 200 to 2000000 µS/cm |
| Power Supply | 24V DC Two Wire Loop Powered |
| Power Consumption | < 50 mW |
| Display | Local display LCD with backlit |
| Type of Output | 4-20 mA DC Output / 4-20 mA with HART (Generic) |
| Electronics Transmitter Accuracy | +/- 0.25% F. S. |
| Response Time | < 500 mSec |
| Temperature Coefficient | +/- 0.01% per °C |
| Temperature Compensation | RTD PT-100 / RTD PT-1000 |
| Ambient Conditions | Temperature -20 to 55 °C / Humidity 5 to 95% non condensing |
| Isolation | 1.4 KV between Input, Output & Power Supply |
| Sensor Connection | 1) Through BNC connector 2) Through Terminals |
| Conduit Entry | 1) M20X1.5 (F) 2) ½" NPT(F) |
| Dimensions | 155 mm (H) x 105 mm (W) X 130 mm (D) |
| Mounting | 2" Pipe Mounting |
| Electronic Protection Class | Flame Proof CMRI IIA IIB / Weather Proof IP-65 |
| Housing | Cast aluminum with epoxy coating NEMA 4X / SS316 |
| Weight | 1kg (Approximate) |
| Flow Through Assembly (Optional) | SS316 / PP |
| Certification | CE |



Ordering Information

| Parameter | Code | Description |
|-----------|------|--------------------------|
| B | B7 | Toroidal Conductivity |
| | B9 | TDS |
| D | D2 | Weatherproof IP 67 |
| | D3 | Flame Proof CMRI IIA IIB |
| G | G1 | Die Cast Aluminium |
| | G2 | SS316 |

Sample Order Code : B7 D2 G1 H2 I1 K1

| Parameter | Code | Description |
|-----------|------|--------------------------------|
| H | H1 | M 20 x 1.5 (F) |
| | H2 | ½" NPT (F) |
| I | I1 | RTD PT-100 |
| | IY | Other |
| K | K1 | 4 to 20 mA |
| | K2 | 4 to 20 mA with HART (Generic) |

Note :

- Due to our continuous product revisions, design specification and model numbers are subject to change without notice.
- Accuracy defined at Lab Conditions.
- For other requirement please consult factory.
- Sensor & other accessories to be ordered separately.

ELECTRONET EQUIPMENTS PVT. LTD.

| | |
|---|--|
| Factory Address: | Registered Office: |
| Plot No. 8, (SEZ) Phase 1, Kesurdi MIDC, Khandala, Dist.- Satara Pin: 412 801, Maharashtra, India. | Plot No. 84, 85, 86, Tiny Industrial Estate, Kondhwa Budruk, Pune-411 048, Maharashtra, India. |

+91-20-26931476/2039 ho@eeplindia.com +91-20-26934122 www.eeplindia.com

